

# Other Training Areas



Oral Surgery Area

P68



Radiation Area

P70



Orthodontics Area

P72



Anesthesia Area

P76



Pediatric Area

P77

# The SUG (Oral Surgery) Series for Mastering Tooth Extraction, Sutures and other Surgical Treatments

The Oral Surgery Model Series offer models that allow basic incision/suture techniques and infiltration anesthesia practice, as well as models that allow various oral surgery treatments such as tooth extraction and pus removal (incision).



## Oral Surgery Jaw Model [SUG1003-UL-SP-FEM-28]

- Various artificial lesions for performing oral surgery practices such as impacted tooth extraction, pus removal (incision) and torus removal
- Natural form teeth on the model which are fixed to a soft type gingiva material presuming periodontal membrane
- Gingiva designed to allow incisions and sutures
- Basic infiltration anesthesia practice is possible also

**Articulator**

- FE SUG1003-UL-SP-FEM-28    D SUG1003-UL-SP-DM-28
- DP SUG1003-UL-SP-DPM-28    NON SUG1003-UL-SP-HM-28

Training Method			
Anesthesia	<input type="checkbox"/>	Apicoectomy	<input type="checkbox"/>
Normal tooth extraction	<input type="checkbox"/>	Pus removal (incision)	<input type="checkbox"/>
Complicated tooth extraction	<input type="checkbox"/>	Torus removal	<input type="checkbox"/>
Impacted tooth extraction	<input type="checkbox"/>	Tooth ligation/Intermaxillary fixation	<input type="checkbox"/>
Replantation	<input type="checkbox"/>		



## Incision - Suture Practice Kit Ope-Gum [SUG1001-T-SP]

- Gingival sheet is made from 3 different layers - gingiva, periosteum and alveolar bone
- Allows you to experience various incision and suture methods
- Closely simulates the gingival region
- The sheet is replaceable

**Contents of Kit**

Base 1, Ope-Gum Sheet / SUG1002-T-SP 1 sheet

**Replacement Parts**

- Ope-Gum Sheet / SUG1002-T-SP 1 sheet

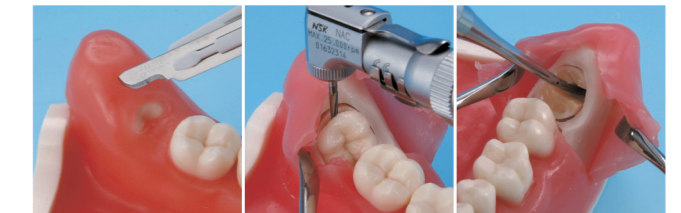
Training Method			
Incision	<input type="checkbox"/>	Suture	<input type="checkbox"/>
Periosteal dissection	<input type="checkbox"/>		

### Complicated Tooth Extraction



On the mandibular right wisdom tooth you can practice gingival incision, desquamation, tooth luxation, curettage and suture presuming complicated tooth extraction.

### Impacted Tooth Extraction



The mandibular left wisdom tooth is horizontally embedded so you can practice bone removal, crown/root division and extirpation presuming the extraction of impacted tooth.

### Torus Removal



The model has a torus on the buccal side of the maxillary left molar so you can perform incision, gingival flap and bone removal using mallets.

### Apicoectomy



Provides a soft type material presuming apical lesion on the maxillary right central incisor so you can do practice presuming bone removal, apicoectomy and lesion extirpation.



## Incision/Pus Removal Model [SUG2001-UL-SP-FEM-28]

- Upper jaw is designed to allow incision and pus removal practice
- Lower jaw allows basic infiltration anesthesia and tooth preparation in order
- Upper jaw has 2 areas with pus-like liquid imbedded allowing pus discharge and draining practice
- Easily replaceable pus area

**Replacement Parts**

- Pus Area (Right) / SUG2002-T-SP
- Pus Area (Left) / SUG2003-T-SP
- Simple Root Tooth Model / A5A-200
- Gingiva / PRO2002-GL-SP-28

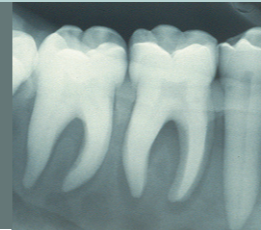
## Tooth Extraction Model [SUG2004-UL-SP-DM-28]

- Tooth extraction practice can be done on 6 maxillary teeth and 6 mandibular teeth
- Anatomically shaped extraction teeth are held in place in the socket by hot-melt (heated glue) with the right amount of resistance allowing realistic extraction
- Extraction pressure, direction and feel can be experienced at a more clinically accurate level
- Repeated practice can be done by using a special hot-melt glue gun (\*please inquire for more information)

*\*This model cannot be used with the FE Articulator.*



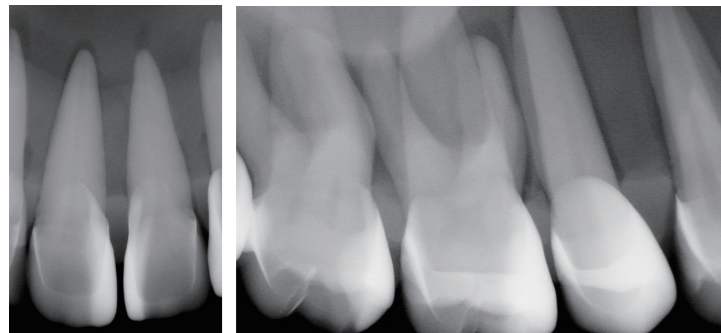
# X-Ray Simulator for mastering Dental Radiography



## Tripod X-ray Manikin Set

- Ideally designed for efficiently and safely learning basic dental X-ray photography skills
- Designed for X-ray photography training using digital X-ray sensor and X-ray film
- Convenient for adjusting height and head positions

Actual Photos from XRY1001-UL-SP-Z



\*Photos provided by courtesy of International Islamic University Malaysia.

## Set Contents



Manikin Head (Adult)



Adult Rubber Mask (Regular)



XRY1001-UL-SP-Z



Tripod X-ray Manikin Finger



Tripod X-ray Manikin Shaft



Tripod X-ray Manikin Tripod



Tripod X-ray Manikin Carry Bag

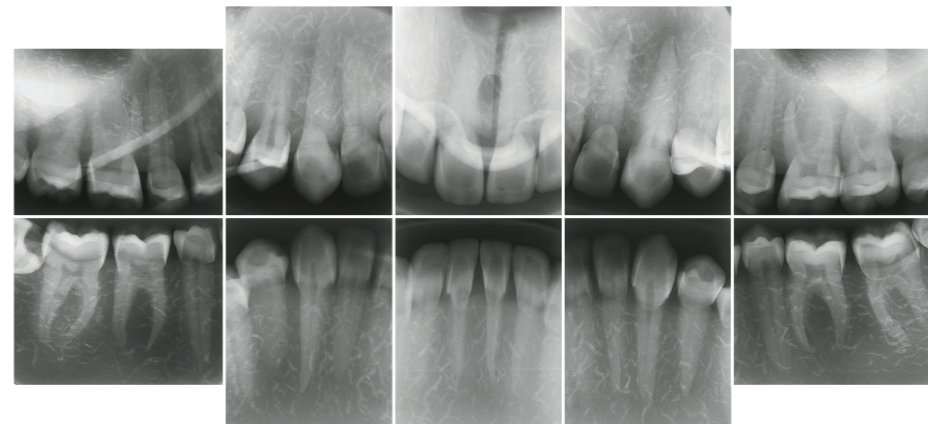
## X-Ray Phantom

- X-Ray simulator for practicing dental radiography use
- Jaw model allows the mastering of bisecting techniques
- Jaw model is X-Ray compatible
- Acquire basic X-Ray techniques such as film angle and projection angle for each area
- Free-moving finger arm allows you to hold the film at the position of your choice so you can practice 10 or 14 exposure techniques
- Phantom unit is stored inside the suitcase
- Can be set up on the chair or on its own easily



Training Method	
Bisecting Technique	<input type="radio"/>
Occlusal Projection	<input type="radio"/>

## 10 Exposure Method



## Set Contents



Head Base Unit



Mask



Jaw Model P27-XR.1



Articulator



Desk Clamp Unit

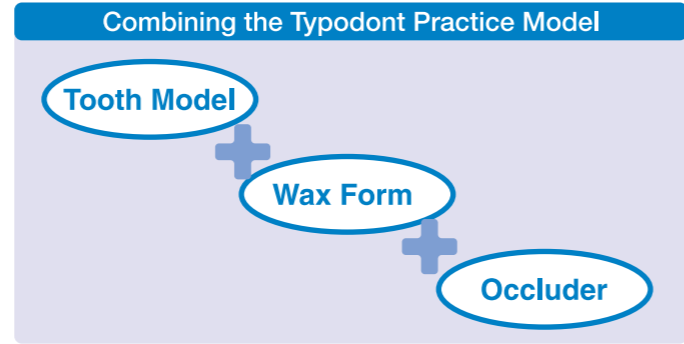


Trunk Unit

# The ORT (Orthodontics) Series for Mastering Various Techniques



By combining together the typodont tooth model, wax form and third party typodont articulators, you can do various typodont practice.



## ● Tooth Model



**Typodont Tooth Model [B9-500]**

•To easily fit the band and bracket, the crown portion is made of plastic and the root portion is made of metal

Parts

17	16	15	14	13	12	11	21	22	23	24	25	26	27
47	46	45	44	43	42	41	31	32	33	34	35	36	37



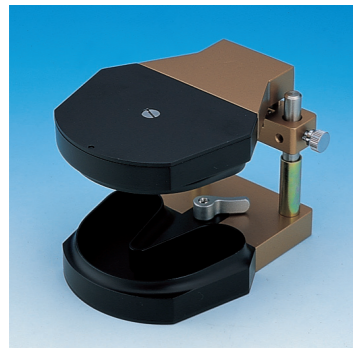
**Typodont Tooth Model [B9-500D]**

•Indentation provided on the facial surface for placing a bracket

Parts

17	16	15	14	13	12	11	21	22	23	24	25	26	27
47	46	45	44	43	42	41	31	32	33	34	35	36	37

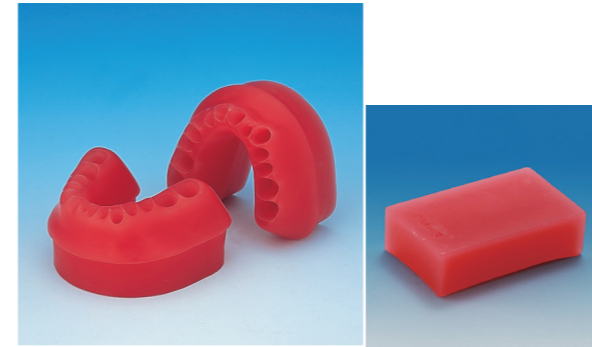
## ● Occluder



**Typodont Occluder [YS-802A]**

•Typodont occluder that can be attached to various ORT Wax Forms

## ● Wax Form



**Wax Form [ORT Various Wax]**

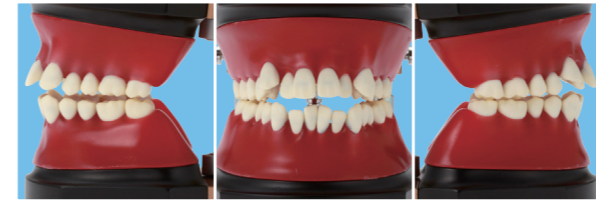
•Wax form based on the classification of Angle malocclusion

**Variation**

- ORT1001-UL-W-28 class I
- ORT1002-UL-W-28 class II division 1
- ORT1003-UL-W-28 class II division 2
- ORT1004-UL-W-28 class III
- ORT1005-UL-W-28 class I (w/o second molar)

\*The wax block is included with the ORT Wax Form.

### Examples of each wax form variation with B9-500 typodont teeth



•ORT1001-UL-W-28 class I



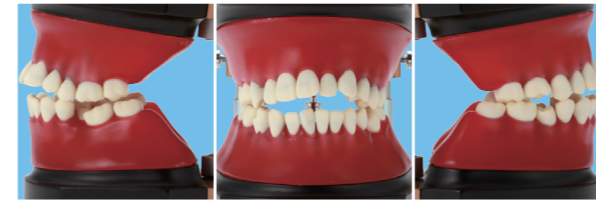
•ORT1004-UL-W-28 class III



•ORT1002-UL-W-28 class II division 1

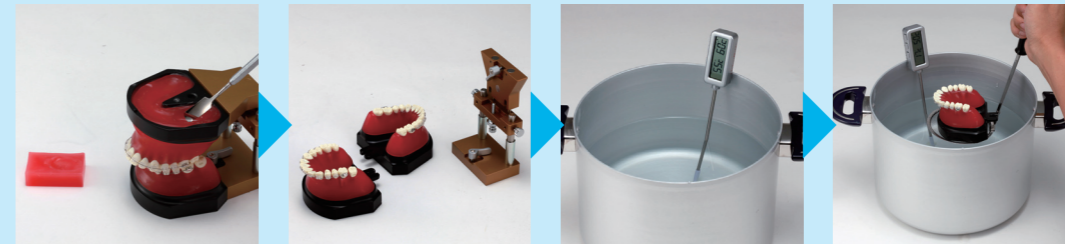


•ORT1005-UL-W-28 class I (w/o second molar)



•ORT1003-UL-W-28 class II division 2

### Example of Practicing with the Typodont Practice Model



1) Attach the ORT various Wax Form to the Typodont Occluder by applying molten wax with an instrument. (use the included wax block)

2) Remove the jaws with the black base as pictured.

3) Dip the jaws into 55 ~ 60°C warm water.

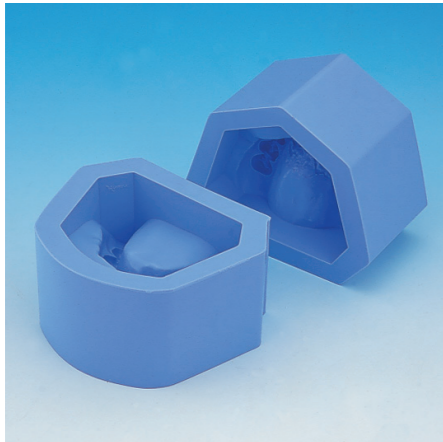
4) Lift the jaws from the warm water and dip into cool water. Observe the result.



### Resin Malocclusion Model

[ORT Various Resin]

- 1-color resin malalignment model based on the Angle's classification method
- 10 different classifications available (please refer to the chart on next page)



### Plaster Model Mold (malocclusion)

[ORT Various Mold]

- A plaster model mold with the same dentition as the ORT Various Resin model series
- 10 different classifications available (please refer to the chart on next page)

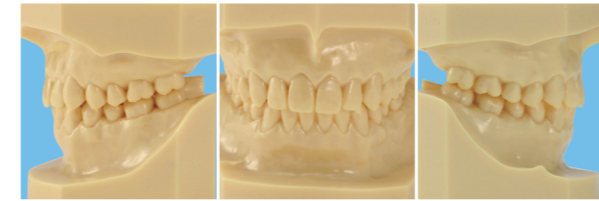
**Included**

- Upper/Lower jaw 1 each

### ORT Various Resin / ORT Various Mold Figuration List

Model Number	Classification
ORT1006-UL-HD-28 / ORT1006-UL-MO-28	Normal Occlusion
ORT1007-UL-HD-28 / ORT1007-UL-MO-28	Class I Reversed Occlusion
ORT1008-UL-HD-28 / ORT1008-UL-MO-28	Class I Diastema
ORT1009-UL-HD-28 / ORT1009-UL-MO-28	Class I Crowding
ORT1010-UL-HD-28 / ORT1010-UL-MO-28	Class II Division 1 Deep Overbite
ORT1011-UL-HD-28 / ORT1011-UL-MO-28	Class II Division 1 Crowding
ORT1012-UL-HD-28 / ORT1012-UL-MO-28	Class II Division 2 Deep Overbite
ORT1013-UL-HD-28 / ORT1013-UL-MO-28	Class II Division 2 Crowding
ORT1014-UL-HD-28 / ORT1014-UL-MO-28	Class III Reversed Occlusion
ORT1015-UL-HD-28 / ORT1015-UL-MO-28	Class III Reversed Occlusion

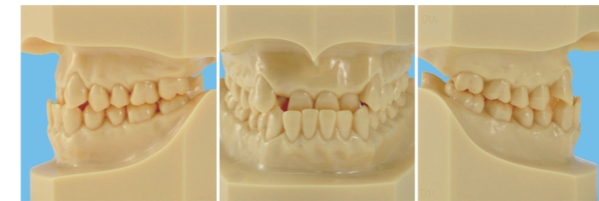
\* Depends on Angle's classification.



ORT1006-UL-HD-28 Normal Occlusion



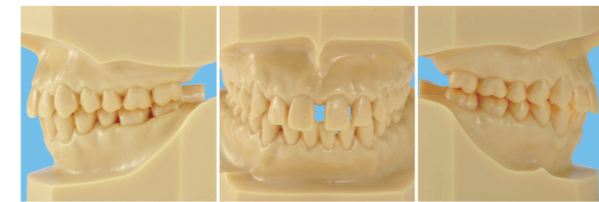
ORT1011-UL-HD-28 Class II Division 1 Crowding



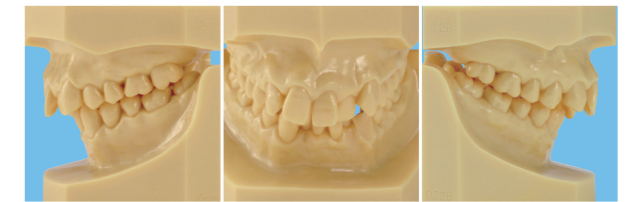
ORT1007-UL-HD-28 Class I Reversed Occlusion



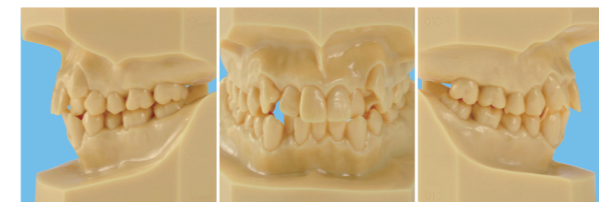
ORT1012-UL-HD-28 Class II Division 2 Deep Overbite



ORT1008-UL-HD-28 Class I Diastema



ORT1013-UL-HD-28 Class II Division 2 Crowding



ORT1009-UL-HD-28 Class I Crowding



ORT1014-UL-HD-28 Class III Reversed Occlusion



ORT1010-UL-HD-28 Class II Division 1 Deep Overbite

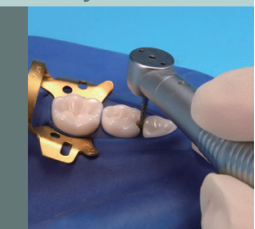


ORT1015-UL-HD-28 Class III Reversed Occlusion

## Injection Practice Models for Mastering the Anesthesia Area



## The PDI (Pediatric Dentistry) Series for practicing various techniques to master Pediatric Dentistry Treatments



### Conduction Anesthesia Model [SUG2005-UL-SP]

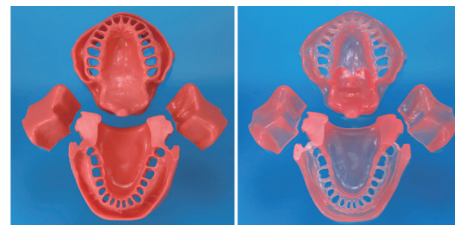
- 11 anesthetic contact sensor points, 7 in the upper jaw and 4 in the lower jaw
- Battery-powered audio signal and light signal indicates when correct position and angle injection is achieved. Audio signal can be turned off for testing and evaluation purposes.
- 1m electric cord connecting the model and indicator unit
- Indicator unit uses 2 AAA-size batteries (batteries not included)
- Optional clear pink upper and lower gingivas (included) allow view of injection, making it ideal for beginning students
- Easy attachment to the NISSIM Head allowing a more realistic training experience
- Comes with 32 removable anatomically shaped teeth

*\*Always remove all teeth before peeling off the upper and lower gingiva. Please remove the gingiva in the following order: lower → upper → left TMJ → right TMJ.  
 \*The gingiva is very soft and fragile. Please use care when handling to avoid ripping.  
 \*DO NOT use water, anesthetic solution, or any other liquid when practicing injection on this model.  
 \*Injection syringe and needle are not included.  
 \*Dental simulator phantom is not included.*

**Replacement Parts**  
**GINGVA** SUG2005-GUL-SP

Training Method	
Conduction anesthesia	<input type="checkbox"/>

### Replacement Parts



- Gingiva for SUG2005-UL**
- 2 different colors to choose from
- MODEL NAME**
- Pink (SUG2005-GUL-SP)
  - Clear pink (SUG2005-GUL-SCP)



### Infiltration Anesthesia Jaw Model [SUG1004-UL-SP-FEM-28]

- Soft type gingiva allowing infiltration anesthesia practice
- Puncture marks do not remain, therefore allowing repeated injection practice

**Articulator**

**FE** SUG1004-UL-SP-FEM-28    **D** SUG1004-UL-SP-DM-28  
**DP** SUG1004-UL-SP-DPM-28    **NON** SUG1004-UL-SP-HM-28

**Replacement Parts**  
**GINGVA** SUG1004-GUL-SP-28

Training Method	
Infiltration anesthesia	<input type="checkbox"/>



### Soft Gingiva Jaw Model (Mixed Dentition) [PDI2001-UL-SP-FEM]

- Pedo jaw model representing a 6-year old dentition
- Soft gingiva type model
- Mixed dentition with primary teeth and permanent teeth (permanent teeth are #16, #26, #36, #46)
- Suited for abutment and cavity preparation

**Articulator**

**FE** PDI2001-UL-SP-FEM    **D** PDI2001-UL-SP-DM  
**DP** PDI2001-UL-SP-DPM    **NON** PDI2001-UL-SP-HM

**Replacement Parts**  
**TOOTH** Please refer to the pictures below.  
**GINGVA** PDI2001-GUL-SP

### Variation



### Hard Gingiva Jaw Model (Mixed Dentition) [PDI2001-UL-HD-FEM]

- Pedo jaw model representing a 6-year old dentition
- Hard gingiva type model
- Mixed dentition with primary teeth and permanent teeth
- Suited for abutment and cavity preparation

**Articulator**

**FE** PDI2001-UL-HD-FEM    **D** PDI2001-UL-HD-DM  
**DP** PDI2001-UL-HD-DPM    **NON** PDI2001-UL-HD-HM

**Replacement Parts**  
**TOOTH** Please refer to the pictures below.



### Pedo Plaster Jaw Model (24 teeth) [PDI2001-UL-MO]

- Rubber mold for making the PDI2001-UL study model base
- Included**  
 Upper/Lower jaw 1 each

### Replacement Parts



### Simple Root Tooth Model (Primary Tooth) [A4A-900]

Parts

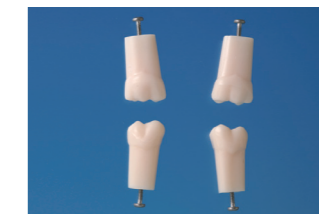
55	54	53	52	51	61	62	63	64	65
85	84	83			73	74	75		



### Simple Root Tooth Model (Primary Tooth) [A4-900]

Parts

	82	81	71	72					
--	----	----	----	----	--	--	--	--	--



### Simple Root Tooth Model (Permanent Tooth) [A5A-200]

Parts

	16								26
	46								36

### Option Parts



### Pedo Endodontic Tooth Model [A12A Series]

- 9 Pediatric tooth models with a pulp chamber and root canal that has a red stained pulpal wall
- #54, #61, #75 teeth has caries condition

Parts

55	54		61		64	65
85	84				74	75